



*THE EVOLUTION OF WETLAND CONSERVATION
ON THE FLATHEAD RESERVATION*

Territories of the Salish, Kalispel & Related Nations



Selected Séliš-Qlispé Place-Names and Translations

WEST OF CONTINENTAL DIVIDE

Słxétk* PLACE OF FAST MOVING WATER Spokane	Nmesulétk* SHIMMERING GOLD WATERS Middle Clark Fork River
Néñmici RIVER DELTA ENTERING A LAKE Lake Pend Oreille	Cłqétk* BROAD SURFACE OF WATER Flathead Lake
Sqłsétwk* KOOTENAI WATERS Kootenai River	Snyelmn PLACE WHERE YOU SURROUND SOMETHING St. Ignace area
Nét'umnétk* BIGHORN SHEEP WATERS Lower Clark Fork River	Nl'aycéstm PLACE OF SMALL BULL TROUT Baldwinsville Creek-Clark Fork confluence / Missoula area
Ep Smłi NO SALMON Upper side of Lolo Pass - Lolo / Clearwater drainage system	Sñlaqł Cłqłi SNAKEHOUSE LAKE Swan Lake
Tmsmłi NO SALMON Lolo area	Nałycestm Sewtk*s BULL TROUT'S WATERS Blackfoot River
Łqetmłs WIDE COTTONWOODS Stevensville	Neq'elstétk* PLUM STUCK IN THE GROUND WATERS Upper Clark Fork River
Nstetecx'etk* WATERS OF THE RED-OBER DOGWOOD Disarmat River	Sñlapqey PLACE WHERE SOMETHING IS SHOT IN THE HEAD Buck area
Epł X's'ýú HAS MOUNTAIN WHITEFISH Whitfish Lake	Qlispé Sx'cu?si KALISPEL PASS Marias Pass
Ntx'etk* RIVER North Fork Flathead River / North Fork Flathead River / Lower Flathead River	Séewile? SANTHER SPARK Chesawah, Va.

EAST OF CONTINENTAL DIVIDE

Sk'uméné PLACE OF POCKET GOPHERS Big Hole Valley	Młmótłex* LAND THAT APPEARS SMOKY Yellowstone Park area
Ołin Sewtk*s WATERS OF THE DIGESTIVE TRACT Belly River	Céatłalqn THREE SHARPENED PEAKS Sawtooth Hills
Sntx'eyéñ BACKBONE Continental Divide	Cx'min Sewtk*s HIDE FLESHER'S WATERS Yellowstone River
Qławqn BEAVERHEAD Beaverhead River	K'alı? Sewtk*s YELLOW'S WATERS Judith River
Cłmłsé COTTONWOODS ABOVE-THE-WATER Helena area	Nk'tnétk* BIG WATER Missouri River
Epłyu Ntx'etk*s PRINT'S RIVER Missouri River near Helena	Celıs Smxe GRIZZLY BEAR'S HAND Bear Paw Mountains
Snsu'k'l ICE PILED UP Sun River at Fort Shaw	Npiqk* WHITE WATER Milb River
Nétxsñé PLACE WHERE WATER GOES OVER A ROCKY LEDGE Great Falls	Epł Cılıyalsátq* Ntx'etk*s RIVER OF EYES WIDE OPEN WOOD Musselshell River
Epł Msawye? HAS EDIBLE VALERIAN ROOT Madison River	Ł'umné Sewtk*s BIGHORN SHEEP'S WATERS Bighorn River
Cx'tx'tpé CONFLUENCE OF MORE THAN TWO WATERWAYS Area around Three Forks, MT	Sñlápé BEND IN THE RIVER Area of Melstone, MT
Ep Słx'ex'e'ené IT HAS SMALL BLACK	

Tmsmłi Selected Salish place-names

- Blue shading indicates approximate territories and primary use-areas of four Salishan nations: Séliš, Qlispé, Tuñáxn, and Smeúse??
- Flathead and Bitterroot Reservations as designated in 1855 Hellgate Treaty
- Modern Boundaries
- Continental Divide



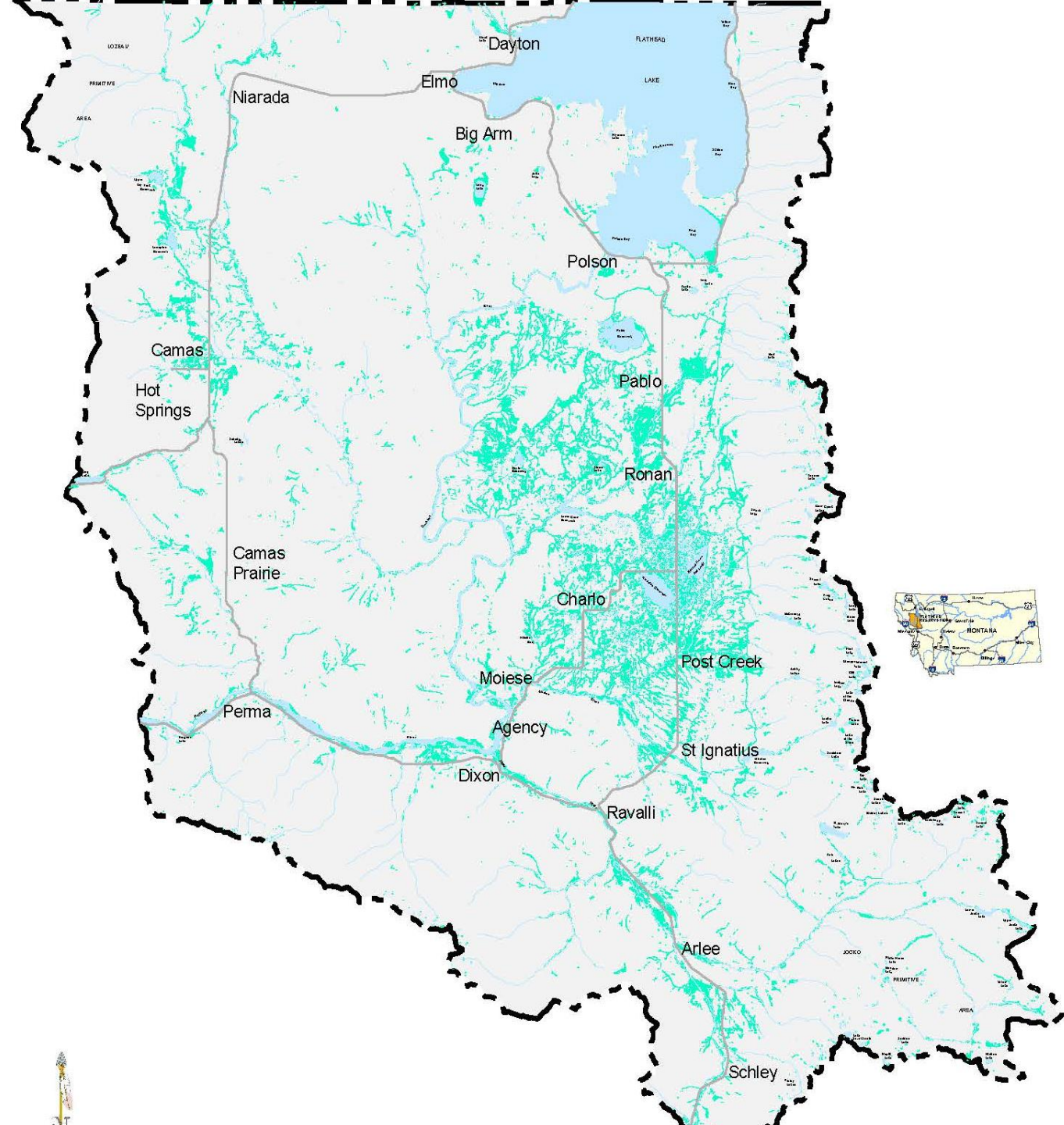
NORTH

WATERS OF THE FLATHEAD INDIAN RESERVATION

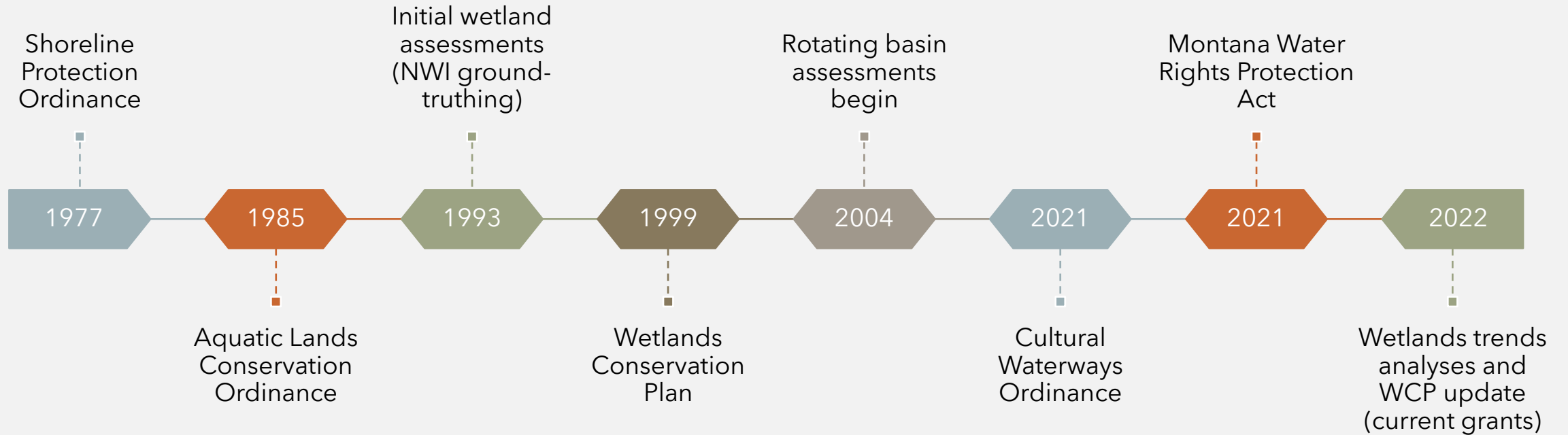
5% of total area is Flathead Lake

40,000+ acres of wetlands

1,000 linear miles of
perennial rivers and streams



CSKT WETLANDS PROGRAM HISTORY



SHORELINE PROTECTION ORDINANCE

- Regulates docks, breakwaters in Flathead Lake
- Protects remaining shoreline marsh
- Court-tested (1982) and led by independent Shoreline Board
- *Pictured: East Bay Marsh, near Polson*





AQUATIC LANDS CONSERVATION ORDINANCE

- Modeled after CWA 404 Permit Program
- Waters of the *Reservation*
- Follows compensation ratios from 1999 Wetland Conservation Plan
- *Pictured: Kicking Horse Reservoir and the Mission Mountains*



SACKETT V. EPA

Pictured: Common yellowthroat, by Craig Barfoot

NON- JURISDICTIONAL WETLANDS

- Many pingo, prairie pothole wetlands in the Mission Valley
- Many streams on the Western (arid) side of Reservation
- *ALCO 87A has yet to be tested in court*



SURGE IN DEVELOPMENT





WHY WE'RE HOPEFUL...

Photo by Craig Barfoot

Preservation of
Wetlands of
Special Concern

Restoration

Enhancement

Creation

Forested and Shrub

Pre-project: 3 : 1
Post-project: 4 : 1

Pre-project: 2.5 : 1
Post-project: 3.5 : 1

Pre-project 4 : 1
Post-project: 5 : 1

Pre-project 4 : 1
Post-project: 5 : 1

Emergent and Open Water

Pre-project 2 : 1
Post-project 3 : 1

Pre-project 1.5 : 1
Post-project: 2.5 : 1

Pre-project 3 : 1
Post-project 4 : 1

Pre-project 3 : 1
Post-project: 4 : 1

EFFECTIVE COMPENSATORY
MITIGATION



2021

CULTURAL WATERWAYS ORDINANCE

Designated the Lower Flathead River as the first “Cultural Waterway”



GROWING STAFF AND PROGRAMS

- Montana Water Rights Protection Act started watershed-scale restoration program
- Shoreline Office/Board are educating fee landowners and realtors
- Increased monitoring of wetlands
- More grant funding opportunities for restoration
- Mitigation agreements with MDT



QUESTIONS?

BLAIR.LIBBY
@CSKT.ORG